

TOLECO

RITI-Access Telecenters

Workspace Center Project (WSC)

Background

Many regions of Romania are economically underdeveloped due to their past reliance on the state-owned mining industry. It's vital that new and existing businesses be created and strengthened so that these regions can compete in the global economy.

The Workspace Centers were financed through a World Bank loan given by the Romanian Government (Ministry of the Economy and Commerce) and managed by the National Agency for Mining Area Development (ANDIPRZM) and were passed through a tender process.



Campulung

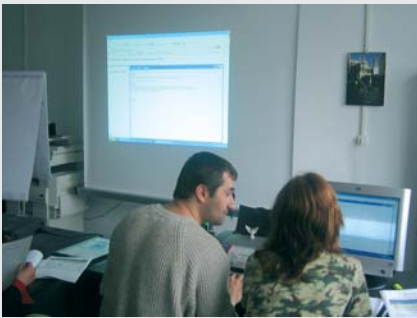
Impacts



Training

The Workspace Center Project creates new job opportunities and supports new income-generating initiatives in underdeveloped / rural regions in northeastern Romania. The WSCs are business incubators that provide beneficiaries (new and existing small businesses) with such support services as information, marketing, consultancies, and business development assistance. Businesses benefit from free access to phone services, fax, Internet, technical and business consultancy, accounting services, and security for the first year of operation. Business consultancy is also available to all local businesses.

The desired end result of the WSC is to create a core business community able to attract foreign investment and launch profitable partnerships with other local or foreign business communities.



Training

One such WSC is operating in the village of Campulung. Under this project, RITI-Access has provided the WSC with additional equipment such as: computers, professional copy machine, binding and laminating device that serves the needs of SMEs located in the incubator and the surrounding community. Also, under this project, RITI-Access supports the WSC objectives by providing a range of business support services.

These services include supplying business clients with access to information and communications technologies (ICTs), such as fax, photocopying, email, and Internet; publishing brochures and other marketing materials for clients; and providing businesses with training in such areas as computer usage, web design, document management, secretarial services.

Future steps...

Business incubators created in disadvantaged areas where competitive IT infrastructure and document management facilities and IT related knowledge is greatly needed. The Campulung WSC Telecenter is a viable project that might be used as a model for future telecenters in other rural Romanian communities

